

Artist Introduction – CHU Hing-wah



Background

- Born in Guangdong Province in 1935
- received the Urban Council Fine Arts Award – Painting (1989), Painter of the Year Award from the Hong Kong Artists' Guild Association (1992), etc. He also received an Asian Cultural Council fellowship, which enabled him to study fine art in New York in 1993
- A retired psychiatric nursing practitioner, CHU's early works depicted the mental anguish experienced by his patients, as well as the sense of inner isolation of urban dwellers. After retirement, he focused on depicting the people, landscapes and sentiments within his community

Artistic style

- Although he uses Chinese painting materials such as xuan paper, brushes, pigments and ink, CHU does not refer his practice to traditional landscape or figure painting.
- Instead, he likes to express the feelings and issues of modern daily life. His extraordinary use of ink and colour adds a harmonious and dreamlike quality to his paintings, which has become a trademark of his artworks

Appreciation of CHU's works



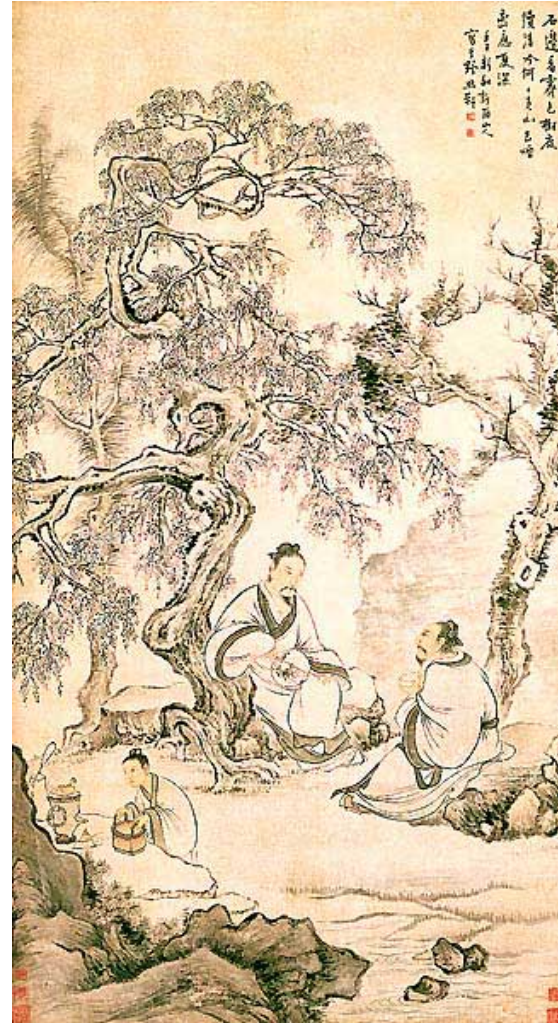
Mother, Child and the Clock Tower
(《鐘樓·母與子》) / 2009
Ink and colour on paper



Pui Kee Cha Chan Restaurant
(《培記茶餐廳》) / 2009
Ink and colour on paper



Boating on a Willow Stream
Shitao (1642-1707) / Not dated
Hanging scroll, ink and colour on paper
127.5 x 54 cm
Collection of the Hong Kong Museum of Art



Scene of Refined Scholars Chanting Poetry
HUA Yan (1682-1756) / 1732
Hanging scroll, ink and colour on paper
176.5 x 96 cm
Collection of the Hong Kong Museum of Art