

List of Exhibits  
English Version

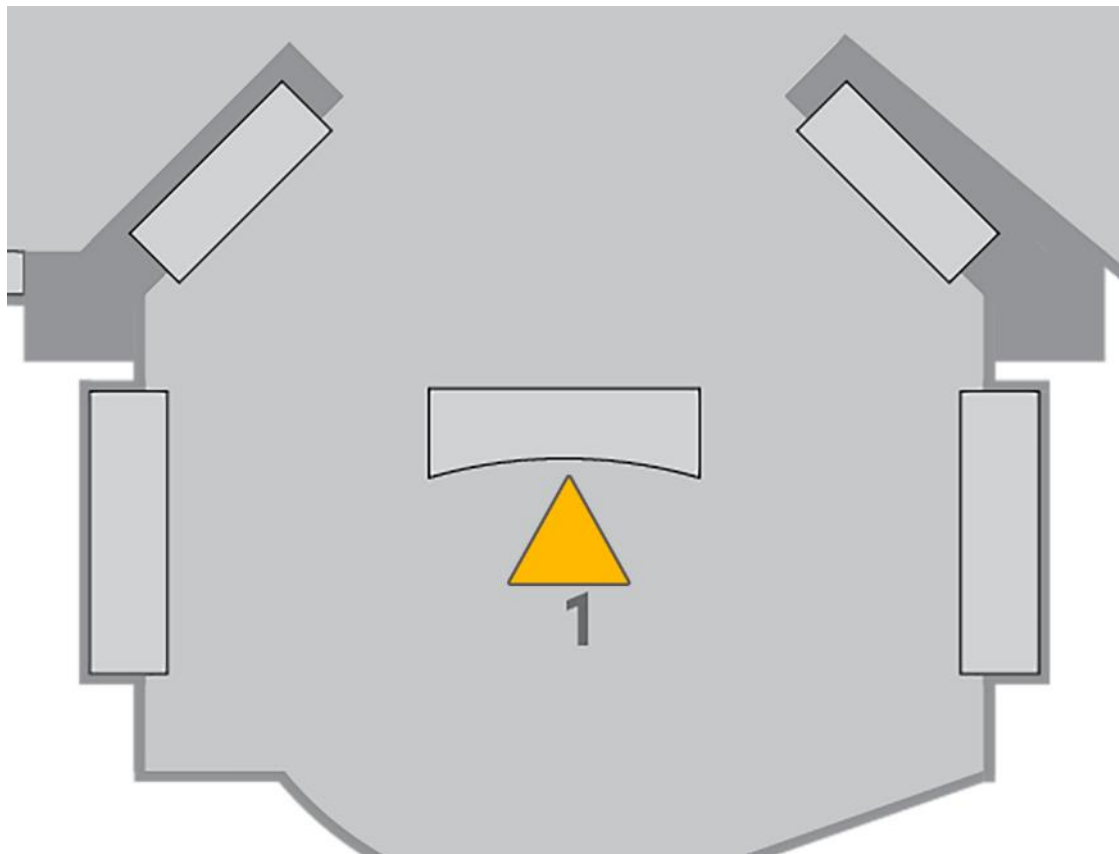


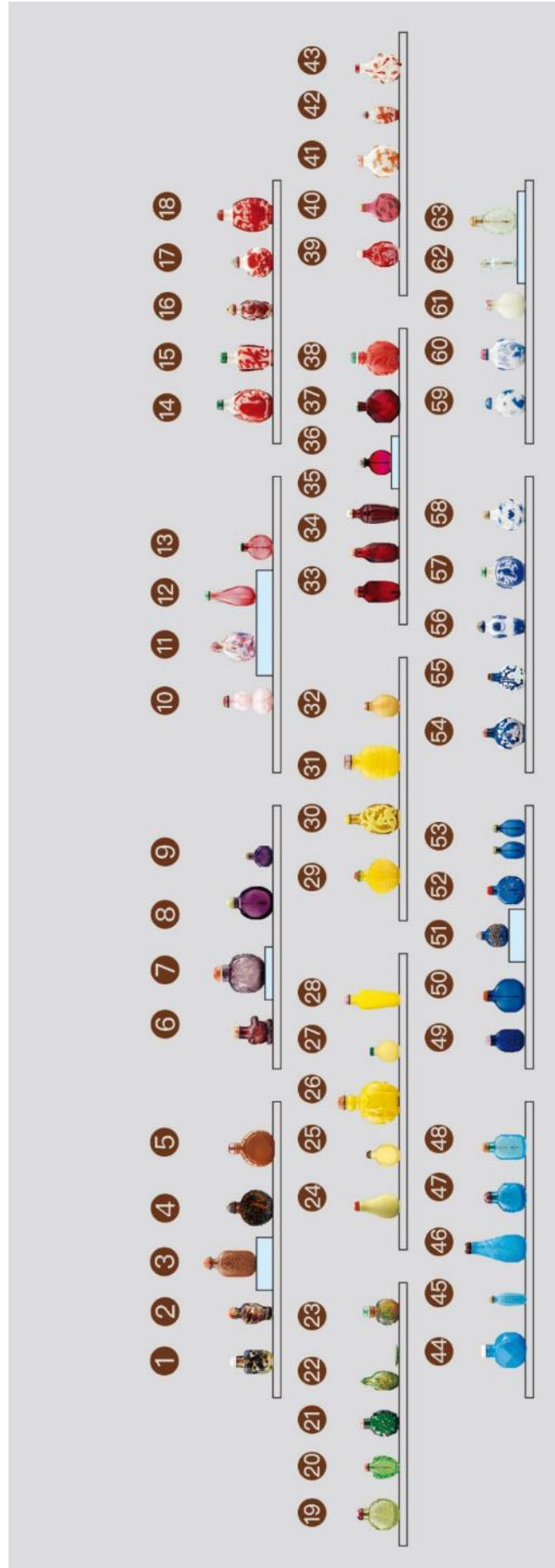
袖珍 Art of Gifting 厚禮

浮雲軒藏中國鼻煙壺捐贈展

The Fuyun Xuan Collection of Chinese Snuff Bottles

## 1.1 Refined Materials - Glass





1. Glass snuff bottle in dotted-colour imitating tortoiseshell

Qing dynasty (1644 – 1911)

Glass

H 6.5 cm L 3.6 cm W 2 cm

Fuyun Xuan Collection donated by Christopher and Josephine Sin  
C2023.0142



2. Glass snuff bottle in twisted-colour

Qing dynasty (1644 – 1911)

Glass

H 6.8 cm Dia 3.1 cm

Fuyun Xuan Collection donated by Christopher and Josephine Sin  
C2023.0141



3. Aventurine glass snuff bottle with *chi*-dragons and *shou* medallion design

Qianlong period (1736 – 1795), Qing dynasty

Glass

H 8 cm L 4 cm W 3 cm

Fuyun Xuan Collection donated by Christopher and Josephine Sin  
C2023.0139



4. Gold-flecked glass snuff bottle

Qing dynasty (1644 – 1911)

Glass

H 7 cm L 5.5 cm W 2.5 cm

Fuyun Xuan Collection donated by Christopher and Josephine Sin  
C2023.0143



5. Brown glass snuff bottle with bamboo pattern

Four-character mark of Qianlong and of the period  
(1736 – 1795), Qing dynasty

Glass

H 7 cm L 5.5 cm W 1.5 cm

Fuyun Xuan Collection donated by Christopher and Josephine Sin  
C2023.0138



- 
6. Translucent purple glass snuff bottle with duck and fish design  
Qing dynasty (1644 – 1911)  
Glass  
H 6 cm L 4.3 cm W 4.6 cm  
Fuyun Xuan Collection donated by Christopher and Josephine Sin  
C2023.0137



- 
7. Translucent purple glass snuff bottle with “Four Elders of Mount Shang” design  
Qing dynasty (1644 – 1911)  
Glass  
H 7.8 cm L 5.9 cm W 3 cm  
Fuyun Xuan Collection donated by Christopher and Josephine Sin  
C2023.0146



- 
8. Translucent purple glass snuff bottle  
Qing dynasty (1644 – 1911)  
Glass  
H 7 cm L 5 cm W 2 cm  
Fuyun Xuan Collection donated by Christopher and Josephine Sin  
C2023.0145



- 
9. Octagonal translucent purple glass snuff bottle  
Qing dynasty (1644 – 1911)  
Glass  
H 4 cm L 3.2 cm W 2.1 cm  
Fuyun Xuan Collection donated by Christopher and Josephine Sin  
C2023.0144



- 
10. Double-gourd-shaped pink glass snuff bottle with lotus petals design  
Qing dynasty (1644 – 1911)  
Glass  
H 7.5 cm Dia 4 cm  
Fuyun Xuan Collection donated by Christopher and Josephine Sin  
C2023.0084





11. Translucent glass snuff bottle with blue and red dots design  
 Qing dynasty (1644 – 1911)  
 Glass  
 H 7.1 cm L 4.5 cm W 2.8 cm  
 Fuyun Xuan Collection donated by Christopher and Josephine Sin  
 C2023.0148



12. Light rouge glass snuff bottle  
 Qing dynasty (1644 – 1911)  
 Glass  
 H 8 cm L 3 cm W 2 cm  
 Fuyun Xuan Collection donated by Christopher and Josephine Sin  
 C2023.0087



13. Light red glass snuff bottle in twisted-colour  
 Qing dynasty (1644 – 1911)  
 Glass  
 H 5.1 cm L 3.8 cm W 1.7 cm  
 Fuyun Xuan Collection donated by Christopher and Josephine Sin  
 C2023.0086



14. Glass snuff bottle with fish and lotus design in red overlay on snow-white ground  
 Qing dynasty (1644 – 1911)  
 Glass  
 H 8.5 cm L 5 cm W 2.5 cm  
 Fuyun Xuan Collection donated by Christopher and Josephine Sin  
 C2023.0091



15. Glass snuff bottle with *feilong* in cursive script in red overlay on snow-white ground  
 Qing dynasty (1644 – 1911)  
 Glass  
 H 8 cm L 4 cm W 3 cm  
 Fuyun Xuan Collection donated by Christopher and Josephine Sin  
 C2023.0096



16. Glass snuff bottle with *chi*-dragon and *lingzhi* design in red overlay on translucent ground  
 Four-character mark of Qianlong and of the period  
 (1736 – 1795), Qing dynasty  
 Glass  
 H 7 cm Dia 3 cm  
 Fuyun Xuan Collection donated by Christopher and Josephine Sin  
 C2023.0095



17. Glass snuff bottle with poem inscription and chrysanthemum design in red overlay on white ground  
 Qing dynasty (1644 – 1911)  
 Glass  
 H 6.3 cm L 4.4 cm W 2 cm  
 Fuyun Xuan Collection donated by Christopher and Josephine Sin  
 C2023.0092



18. Glass snuff bottle with flower basket design in red overlay on snow-white ground  
 Qing dynasty (1644 – 1911)  
 Glass  
 H 8.5 cm L 5.2 cm W 2.5 cm  
 Fuyun Xuan Collection donated by Christopher and Josephine Sin  
 C2023.0090



19. Translucent green glass snuff bottle with animal mask design  
 Qing dynasty (1644 – 1911)  
 Glass  
 H 16.4 cm L 4.7 cm W 2.5 cm  
 Fuyun Xuan Collection donated by Christopher and Josephine Sin  
 C2023.0132



20. Translucent green glass snuff bottle with a pair of *chi*-dragon design  
 Qing dynasty (1644 – 1911)  
 Glass  
 H 5.3 cm L 3.5 cm W 1.2 cm  
 Fuyun Xuan Collection donated by Christopher and Josephine Sin  
 C2023.0131



21. Translucent green glass snuff bottle with mallow flower design  
 Qing dynasty (1644 – 1911)  
 Glass  
 H 6 cm L 4 cm W 2 cm  
 Fuyun Xuan Collection donated by Christopher and Josephine Sin  
 C2023.0130



22. Translucent green glass snuff bottle with *kui*-dragon design and saucer in dotted-colour  
 Qing dynasty (1644 – 1911)  
 Glass  
 Snuff bottle: H 5.9 cm L 3 cm W 1.1 cm  
 Saucer: H 0.3 cm L 3.2 cm W 2.3 cm  
 Fuyun Xuan Collection donated by Christopher and Josephine Sin  
 C2023.0149



23. Glass snuff bottle with elephant design in multicolour overlay on ochre ground  
 Qing dynasty (1644 – 1911)  
 Glass  
 H 5.5 cm L 4 cm W 2.5 cm  
 Fuyun Xuan Collection donated by Christopher and Josephine Sin  
 C2023.0136



24. Greenish-yellow glass snuff bottle  
 Four-character mark of Daoguang and of the period  
 (1820 – 1850), Qing dynasty  
 Glass  
 H 7 cm L 3.6 cm W 3.2 cm  
 Fuyun Xuan Collection donated by Christopher and  
 Josephine Sin  
 C2023.0073



25. Yellow glass snuff bottle with round panels  
 Qing dynasty (1644 – 1911)  
 Glass  
 H 5.1 cm L 3.5 cm W 2.1 cm  
 Fuyun Xuan Collection donated by Christopher and Josephine Sin  
 C2023.0069





---

26. Yellow glass snuff bottle with elephant design

Qing dynasty (1644 – 1911)

Glass

H 9.5 cm L 6.5 cm W 3.7 cm

Fuyun Xuan Collection donated by Christopher and Josephine Sin  
C2023.0071



---

27. Yellow glass snuff bottle

Four-character mark of Qianlong period, Qing dynasty

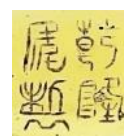
18th – 19th century

Glass

H 4.6 cm L 3.2 cm W 1.8 cm

Fuyun Xuan Collection donated by Christopher and  
Josephine Sin

C2023.0066



---

28. Yellow glass snuff bottle of slender form

Qing dynasty (1644 – 1911)

Glass

H 18.4 cm L 3 cm W 1.9 cm

Fuyun Xuan Collection donated by Christopher and Josephine Sin  
C2023.0068



---

29. Yellow glass snuff bottle with wave pattern

Qing dynasty (1644 – 1911)

Glass

H 7 cm L 5.2 cm W 2.9 cm

Fuyun Xuan Collection donated by Christopher and Josephine Sin  
C2023.0067



---

30. Glass snuff bottle with *chi*-dragon design in yellow overlay on translucent brown ground

Qing dynasty (1644 – 1911)

Glass

H 8.3 cm L 4.5 cm W 2.2 cm

Fuyun Xuan Collection donated by Christopher and Josephine Sin  
C2023.0076



31. Yellow glass snuff bottle with archaistic vessel pattern design  
Qing dynasty (1644 – 1911)  
Glass  
H 8.5 cm L 5 cm W 3 cm  
Fuyun Xuan Collection donated by Christopher and Josephine Sin  
C2023.0070



32. Light brown glass snuff bottle imitating agate  
Qing dynasty (1644 – 1911)  
Glass  
H 5.5 cm L 3.5 cm W 2.5 cm  
Fuyun Xuan Collection donated by Christopher and Josephine Sin  
C2023.0072



33. Translucent red glass snuff bottle  
Mark of “Wanya Xuan”  
Qing dynasty (1644 – 1911)  
Glass  
H 7 cm L 3.3 cm W 1.8 cm  
Fuyun Xuan Collection donated by Christopher and Josephine Sin  
C2023.0081



34. Translucent red glass snuff bottle with Three Friends of Winter design  
Qing dynasty (1644 – 1911)  
Glass  
H 7.2 cm L 3 cm W 2 cm  
Fuyun Xuan Collection donated by Christopher and Josephine Sin  
C2023.0080



35. Translucent red glass snuff bottle with ten lobes  
Four-character mark of Qianlong and of the period  
(1736 – 1795), Qing dynasty  
Glass  
H 8 cm Dia 3 cm  
Fuyun Xuan Collection donated by Christopher and Josephine Sin  
C2023.0079



36. Translucent red glass snuff bottle

Qing dynasty (1644 – 1911)

Glass

H 5.2 cm L 3.8 cm W 1.8 cm

Fuyun Xuan Collection donated by Christopher and Josephine Sin  
C2023.0085



37. Octagonal translucent red glass snuff bottle

Two-character mark of Qianlong and of the period  
(1736 – 1795), Qing dynasty

Glass

H 7 cm L 5 cm W 3.5 cm

Fuyun Xuan Collection donated by Christopher and  
Josephine Sin  
C2023.0082



38. Glass snuff bottle in opaque red imitating coral with elephant design

Qing dynasty (1644 – 1911)

Glass

H 7.5 cm L 5.2 cm W 3.3 cm

Fuyun Xuan Collection donated by Christopher and Josephine Sin  
C2023.0083



39. Glass snuff bottle carved with designs of “searching for plum blossoms in the snow” and sage holding flower in white overlay on red ground

Qing dynasty (1644 – 1911)

Glass

H 6.5 cm L 4 cm W 2 cm

Fuyun Xuan Collection donated by Christopher and Josephine Sin  
C2023.0099



40. Glass snuff bottle with Spring Water and Autumn Mountain design in brown overlay on pink ground

Qing dynasty (1644 – 1911)

Glass

H 6 cm L 4.3 cm W 1.8 cm

Fuyun Xuan Collection donated by Christopher and Josephine Sin  
C2023.0098



---

41. Glass snuff bottle with children at play design in red overlay on white ground  
1834  
Glass  
H 6.3 cm L 4.8 cm W 2.5 cm  
Fuyun Xuan Collection donated by Christopher and Josephine Sin  
C2023.0094



---

42. Glass snuff bottle with wrapped-cloth and floral design in red overlay on white ground  
Four-character mark of Qianlong and of the period  
(1736 – 1795), Qing dynasty  
Glass  
H 5.7 cm L 2.6 cm W 1.4 cm  
Fuyun Xuan Collection donated by Christopher and Josephine Sin  
C2023.0089



---

43. Glass snuff bottle with double-gourd design in red overlay on white ground  
Qing dynasty (1644 – 1911)  
Glass  
H 7 cm L 4.5 cm W 2.5 cm  
Fuyun Xuan Collection donated by Christopher and Josephine Sin  
C2023.0093



---

44. Octagonal blue glass snuff bottle  
Four-character mark of Daoguang and of the period  
(1821 – 1850), Qing dynasty  
Glass  
H 6.9 cm L 5.4 cm W 4.2 cm  
Fuyun Xuan Collection donated by Christopher and Josephine Sin  
C2023.0109



45. Light blue glass snuff bottle with *ruyi* and bosses design

Four-character mark of Qianlong and of the period

(1736 – 1795), Qing dynasty

Glass

H 5.8 cm Dia 2.1 cm

Fuyun Xuan Collection donated by Christopher and Josephine Sin

C2023.0105

46. Blue glass snuff bottle with *kui*-dragon design

Four-character mark of Tongzhi and of the period

(1862 – 1874), Qing dynasty

Glass

H 9.5 cm Dia 4.2 cm

Fuyun Xuan Collection donated by Christopher and Josephine Sin

C2023.0110



## 47. Translucent blue glass snuff bottle with floral design

Four-character mark of Jiaqing and of the period

(1796 – 1820), Qing dynasty

Glass

H 6.5 cm L 4.5 cm W 4 cm

Fuyun Xuan Collection donated by Christopher and Josephine Sin

C2023.0108



## 48. Translucent light blue glass snuff bottle with dragon and phoenix design

Qing dynasty (1644 – 1911)

Glass

H 6.8 cm L 3.8 cm W 1.8 cm

Fuyun Xuan Collection donated by Christopher and Josephine Sin

C2023.0107



## 49. Translucent blue glass snuff bottle with lotus petals design

Qing dynasty (1644 – 1911)

Glass

H 6 cm L 3.5 cm W 1.5 cm

Fuyun Xuan Collection donated by Christopher and Josephine Sin

C2023.0106





50. Translucent blue glass snuff bottle

Four-character mark of Guangxu and of the period  
(1875 – 1908), Qing dynasty

Glass

H 6.3 cm L 5.1 cm W 2.2 cm

Fuyun Xuan Collection donated by Christopher and  
Josephine Sin

C2023.0111



51. Blue aventurine-splashed glass snuff bottle

Qianlong period (1736 – 1795), Qing dynasty

Glass

H 5 cm L 3.5 cm W 2 cm

Fuyun Xuan Collection donated by Christopher and Josephine Sin

C2023.0113



52. Blue aventurine-splashed glass snuff bottle

Qianlong period (1736 – 1795), Qing dynasty

Glass

H 5.8 cm L 4.3 cm W 2.7 cm

Fuyun Xuan Collection donated by Christopher and Josephine Sin

C2023.0112



53. Pair of translucent blue glass snuff bottles with landscape design

Four-character mark of Qianlong and of the period  
(1736 – 1795), Qing dynasty

Glass

H 5 cm Dia 2.7 cm each

Fuyun Xuan Collection donated by Christopher and Josephine Sin

C2023.0104



54. Glass snuff bottle with “Su Wu herding sheep” design in white  
overlay on blue ground

Qing dynasty (1644 – 1911)

Glass

H 5.7 cm L 4 cm W 2.2 cm

Fuyun Xuan Collection donated by Christopher and Josephine Sin

C2023.0125



55. Glass snuff bottle carved with “searching for plum blossoms in the snow” design in snow-white overlay on translucent blue ground

Qing dynasty (1644 – 1911)

Glass

H 6.5 cm L 5 cm W 2.5 cm

Fuyun Xuan Collection donated by Christopher and Josephine Sin  
C2023.0126



56. Glass snuff bottle with floral medallion design in blue overlay on white ground

Four-character mark of Qianlong and of the period (1736 – 1795), Qing dynasty

Glass

H 7.5 cm L 3.5 cm W 3.2 cm

Fuyun Xuan Collection donated by Christopher and Josephine Sin  
C2023.0115



57. Glass snuff bottle carved with bats and eagle design in blue overlay on snow-white ground

Qing dynasty (1644 – 1911)

Glass

H 16.7 cm L 4.9 cm W 2.8 cm

Fuyun Xuan Collection donated by Christopher and Josephine Sin  
C2023.0122



58. Glass snuff bottle with bats design in blue overlay on white ground

Qing dynasty (1644 – 1911)

Glass

H 6.4 cm L 4.7 cm W 2 cm

Fuyun Xuan Collection donated by Christopher and Josephine Sin  
C2023.0117



59. Glass snuff bottle with herding and boating design in blue overlay on white ground

1855

Glass

H 6.2 cm L 4.1 cm W 2.1 cm

Fuyun Xuan Collection donated by Christopher and Josephine Sin  
C2023.0121



---

60. Glass snuff bottle carved with willow and fisherman design in a blue overlay on white ground

Qing dynasty (1644 – 1911)

Glass

H 6.8 cm L 4.8 cm W 2.2 cm

Fuyun Xuan Collection donated by Christopher and Josephine Sin  
C2023.0120



---

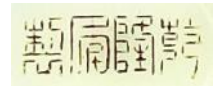
61. White glass snuff bottle imitating jade

Four-character mark of Qianlong and of the period (1736 – 1795), Qing dynasty

Glass

H 6 cm L 4 cm W 2.5 cm

Fuyun Xuan Collection donated by Christopher and Josephine Sin  
C2023.0147



---

62. Translucent light blue glass snuff bottle with *ruyi* and bosses design

Qing dynasty (1644 – 1911)

Glass

H 5.7 cm Dia 1.8 cm

Fuyun Xuan Collection donated by Christopher and Josephine Sin  
C2023.0128



---

63. Translucent light green glass snuff bottle with *kui*-dragons design

Qing dynasty (1644 – 1911)

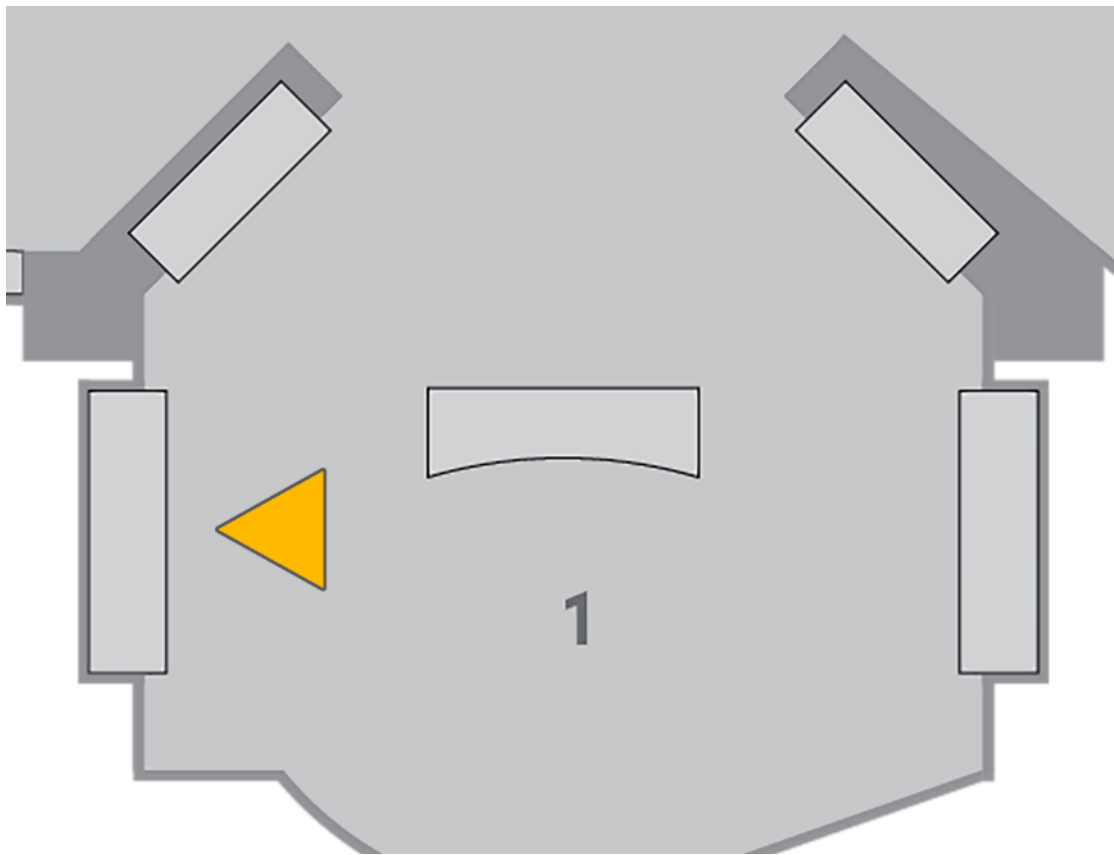
Glass

H 7.3 cm L 4.2 cm W 2.2 cm

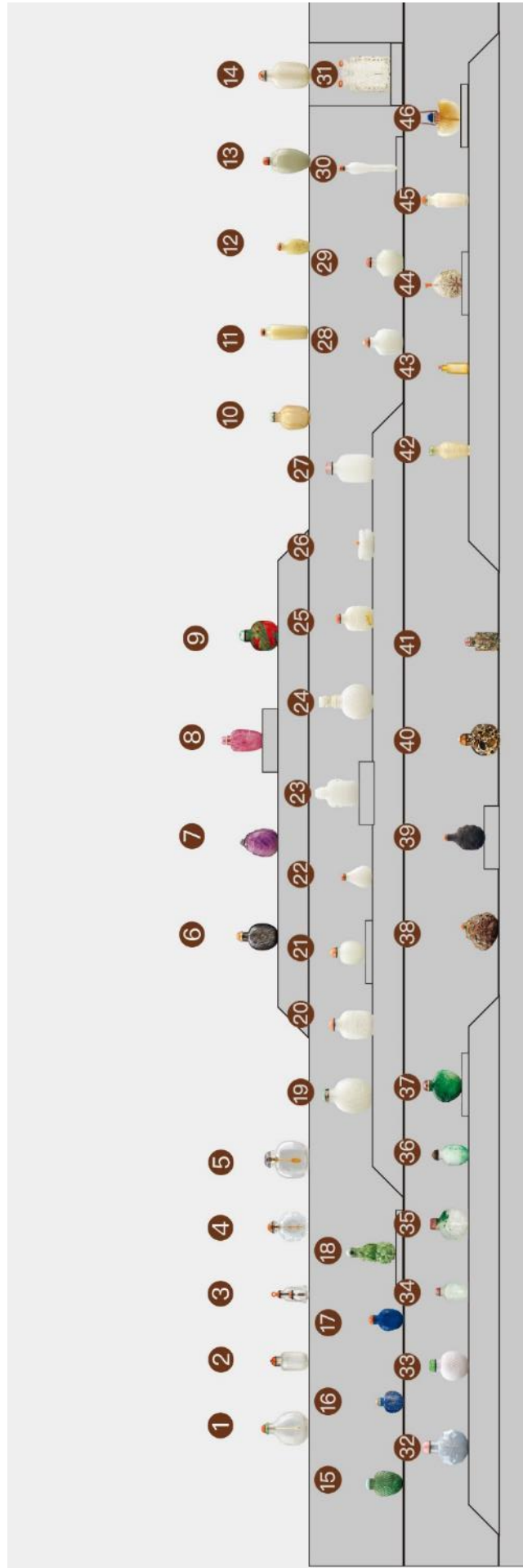
Fuyun Xuan Collection donated by Christopher and Josephine Sin  
C2023.0129



## 1.2 Refined Materials - Jade and minerals



Section (1) Refined Materials - Jade and minerals





1. Rock crystal snuff bottle carved with animal masks and ring handles

Qing dynasty (1644 – 1911)

Rock crystal

H 7.5 cm L 5.5 cm W 2.5 cm

Fuyun Xuan Collection donated by Christopher and Josephine Sin  
C2023.0296



2. Rock crystal snuff bottle carved with wickerwork pattern

Qing dynasty (1644 – 1911)

Rock crystal

H 6 cm L 3 cm W 2.1 cm

Fuyun Xuan Collection donated by Christopher and Josephine Sin  
C2023.0297



3. Conjoined double rock crystal snuff bottle incised with ring pattern

Mark of "Shende Tang"

Daoguang period (1821 – 1850), Qing dynasty

Rock crystal

H 5.9 cm L 3 cm W 3.6 cm

Fuyun Xuan Collection donated by Christopher and Josephine Sin.

C2023.0293



4. Rock crystal snuff bottle carved with floral and *shou* medallion design

Qing dynasty (1644 – 1911)

Rock crystal

H 6.4 cm L 5 cm W 3.1 cm

Fuyun Xuan Collection donated by Christopher and Josephine Sin  
C2023.0295



5. Rock crystal snuff bottle

Mark of "Xingyouheng Tang"

19th century

Rock crystal

H 7 cm L 6 cm W 2.5 cm

Fuyun Xuan Collection donated by Christopher and Josephine Sin  
C2023.0294



---

6. Black rutilated quartz snuff bottle

Qing dynasty (1644 – 1911)

Rutilated quartz

H 6.5 cm L 4.2 cm W 2.3 cm

Fuyun Xuan Collection donated by Christopher and Josephine Sin  
C2023.0290



---

7. Oval-shaped amethyst snuff bottle carved with leaves design

Qing dynasty (1644 – 1911)

Amethyst

H 6 cm L 4.5 cm W 3 cm

Fuyun Xuan Collection donated by Christopher and Josephine Sin  
C2023.0282



---

8. Tourmaline snuff bottle carved with sage crossing bridge, mapgies and plum blossom design

Qing dynasty (1644 – 1911)

Tourmaline

H 6.5 cm L 3.5 cm W 1.7 cm

Fuyun Xuan Collection donated by Christopher and Josephine Sin  
C2023.0281



---

9. Jasper snuff bottle

Qing dynasty (1644 – 1911)

Jasper

H 6 cm L 4.8 cm W 2.6 cm

Fuyun Xuan Collection donated by Christopher and Josephine Sin  
C2023.0280



---

10. Jade snuff bottle carved with petals design

Qing dynasty (1644 – 1911)

Jade (yellow jade)

H 6.5 cm Dia 4 cm

Fuyun Xuan Collection donated by Christopher and Josephine Sin  
C2023.0005



11. Jade snuff bottle with four pierced loop handles

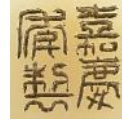
Four-character mark of Jiaqing and of the period (1796 – 1820),  
Qing dynasty

Jade (yellow jade)

H 7.5 cm Dia 2.5 cm

Fuyun Xuan Collection donated by Christopher and  
Josephine Sin

C2023.0002



12. Jade snuff bottle incised with floral and bird design

Qing dynasty (1644 – 1911)

Jade (yellow jade)

H 5.2 cm L 2.5 cm W 1.5 cm

Fuyun Xuan Collection donated by Christopher and Josephine Sin

C2023.0003



13. Jade snuff bottle carved with *chi*-dragon design

Qing dynasty (1644 – 1911)

Jade (celadon jade)

H 7.5 cm L 4 cm W 2.5 cm

Fuyun Xuan Collection donated by Christopher and Josephine Sin

C2023.0010



14. Jade snuff bottle carved with *kui*-dragon and shou character design

Mark of “Yijin Zhai”

Qianlong to Daoguang period, Qing dynasty

Jade (celadon jade)

H 8.2 cm L 4.2 cm W 2.1 cm

Fuyun Xuan Collection donated by Christopher and  
Josephine Sin

C2023.0012



15. Pouch-shaped turquoise snuff bottle carved with cat and butterfly design

Qing dynasty (1644 – 1911)

Turquoise

H 6 cm L 4 cm W 2.2 cm

Fuyun Xuan Collection donated by Christopher and Josephine Sin

C2023.0285



16. Lapis lazuli snuff bottle

Qing dynasty (1644 – 1911)

Lapis lazuli

H 4.5 cm L 3.5 cm W 1.9 cm

Fuyun Xuan Collection donated by Christopher and Josephine Sin

C2023.0283



17. Lapis lazuli snuff bottle carved with bosses design

Qing dynasty (1644 – 1911)

Lapis lazuli

H 5.5 cm L 3.5 cm W 1.6 cm

Fuyun Xuan Collection donated by Christopher and Josephine Sin

C2023.028



18. Double-gourd-shaped jade snuff bottle carved in the round

Qing dynasty (1644 – 1911)

Jade (spinach-green jade)

H 7.8 cm Dia 3.5 cm

Fuyun Xuan Collection donated by Christopher and Josephine Sin

C2023.0062



19. Jade snuff bottle carved with joy and longevity design

Qing dynasty (1644 – 1911)

Jade (white jade)

H 7.8 cm L 5.5 cm W 2.5 cm

Fuyun Xuan Collection donated by Christopher and Josephine Sin

C2023.0016



20. Jade snuff bottle carved with *kui*-dragons design

Qing dynasty (1644 – 1911)

Jade (white jade)

H 7 cm L 4.5 cm W 1.6 cm

Fuyun Xuan Collection donated by Christopher and Josephine Sin

C2023.0019



21. Jade snuff bottle incised with lotus scrolls design

Qing dynasty (1644 – 1911)

Jade (white jade)

H 5.7 cm L 3.8 cm W 2.4 cm

Fuyun Xuan Collection donated by Christopher and Josephine Sin

C2023.0020



22. Jade snuff bottle carved with Shoulao and child design

Qing dynasty (1644 – 1911)

Jade (white jade)

H 5 cm L 3.5 cm W 2 cm

Fuyun Xuan Collection donated by Christopher and Josephine Sin  
C2023.0022



23. Mughal-style jade snuff bottle carved with mallow flower design

Qing dynasty (1644 – 1911)

Jade (white jade)

H 8.5 cm L 5.5 cm W 3.5 cm

Fuyun Xuan Collection donated by Christopher and Josephine Sin  
C2023.0023



24. Mughal-style jade snuff bottle carved with interlocking lotus scrolls design

Qing dynasty (1644 – 1911)

Jade (white jade)

H 6.9 cm L 4.4 cm W 1.6 cm

Fuyun Xuan Collection donated by Christopher and Josephine Sin  
C2023.0024



25. Jade snuff bottle carved with monkey and landscape design

Qing dynasty (1644 – 1911)

Jade (white jade)

H 6 cm L 3.9 cm W 1.8 cm

Fuyun Xuan Collection donated by Christopher and Josephine Sin  
C2023.0018



26. Jade snuff bottle carved with mice design in the form of a bulging sack

Two-character mark of Qianlong period, Qing dynasty

Qing dynasty (1644 – 1911)

Jade (white jade)

H 3 cm L 5 cm W 3 cm

Fuyun Xuan Collection donated by Christopher and Josephine Sin  
C2023.0026



27. Jade snuff bottle

Qing dynasty (1644 – 1911)

Jade (white jade)

H 7.5 cm L 4.5 cm W 2 cm

Fuyun Xuan Collection donated by Christopher and Josephine Sin  
C2023.0013





28. Jade snuff bottle carved with *ruyi* design

Qing dynasty (1644 – 1911)

Jade (white jade)

H 6.4 cm L 4.2 cm W 2.9 cm

Fuyun Xuan Collection donated by Christopher and Josephine Sin

C2023.0017



## 29. Jade snuff bottle carved with the Eight Trigrams design

Qing dynasty (1644 – 1911)

Jade (white jade)

H 5.8 cm L 4.2 cm W 2.2 cm

Fuyun Xuan Collection donated by Christopher and Josephine Sin

C2023.0021



## 30. Jade snuff bottle of slender form

Mark of “*Qian*”

Qing dynasty (1644 – 1911)

Jade (white jade)

H 9.1 cm L 1.9 cm W 1.6 cm

Fuyun Xuan Collection donated by Christopher and Josephine Sin

C2023.0025

31. Conjoined double jade snuff bottle carved with *kui*-dragon design

Qing dynasty (1644 – 1911)

Jade (white jade)

H 14.5 cm L 5.6 cm W 0.8 cm

Fuyun Xuan Collection donated by Christopher and Josephine Sin

C2023.0027



## 32. Decagonal lavender jadeite snuff bottle carved with floral design

Qing dynasty (1644 – 1911)

Jadeite

H 7.3 cm L 2.3 cm W 15.5 cm

Fuyun Xuan Collection donated by Christopher and Josephine Sin

C2023.0064



## 33. Lavender jadeite snuff bottle carved with wickerwork pattern

Qing dynasty (1644 – 1911)

Jadeite

H 6.2 cm L 4.6 cm W 3.2 cm

Fuyun Xuan Collection donated by Christopher and Josephine Sin

C2023.0063



34. Jadeite snuff bottle

Qing dynasty (1644 – 1911)

Jadeite

H 5.1 cm L 3.2 cm W 1.8 cm

Fuyun Xuan Collection donated by Christopher and Josephine Sin

C2023.0058



35. Jadeite snuff bottle

Qing dynasty (1644 – 1911)

Jadeite

H 6 cm L 5 cm W 2.5 cm

Fuyun Xuan Collection donated by Christopher and Josephine Sin

C2023.0057



36. Jadeite snuff bottle

Qing dynasty (1644 – 1911)

Jadeite

H 5.8 cm L 3.3 cm W 2 cm

Fuyun Xuan Collection donated by Christopher and Josephine Sin

C2023.0060



37. Jadeite snuff bottle carved with cranes amidst clouds design

Qing dynasty (1644 – 1911)

Jadeite

H 6 cm L 5 cm W 1.6 cm

Fuyun Xuan Collection donated by Christopher and Josephine Sin

C2023.0059



38. Limonite snuff bottle

Qing dynasty (1644 – 1911)

Limonite

H 6 cm L 6 cm W 3.5 cm

Fuyun Xuan Collection donated by Christopher and Josephine Sin

C2023.0289



39. Duan stone snuff bottle carved with bats amidst clouds design

Qing dynasty (1644 – 1911)

Stone (Duan stone)

H 6.6 cm L 3.9 cm W 1.8 cm

Fuyun Xuan Collection donated by Christopher and Josephine Sin

C2023.0287



40. Puddingstone snuff bottle

Qing dynasty (1644 – 1911)

Puddingstone

H 6.6 cm L 5 cm W 1.6 cm

Fuyun Xuan Collection donated by Christopher and Josephine Sin

C2023.0291



41. Puddingstone snuff bottle

Qing dynasty (1644 – 1911)

Puddingstone

H 5.5 cm L 3 cm W 2 cm

Fuyun Xuan Collection donated by Christopher and Josephine Sin

C2023.0292



42. Agate snuff bottle carved with *kui*-dragon design

Qing dynasty (1644 – 1911)

Agate

H 6.5 cm Dia 2.8 cm

Fuyun Xuan Collection donated by Christopher and Josephine Sin

C2023.0251



43. Agate snuff bottle

Mark of “Yijin Zhai”

Qianlong to Daoguang period, Qing dynasty

Agate

H 4.7 cm Dia 1.8 cm

Fuyun Xuan Collection donated by Christopher and Josephine Sin

C2023.0250



44. Moss agate snuff bottle

Qing dynasty (1644 – 1911)

Agate

H 5.9 cm L 4.5 cm W 1 cm

Fuyun Xuan Collection donated by Christopher and Josephine Sin

C2023.0273



45. Hexagonal agate snuff bottle carved with *ruyi*-shaped clouds design  
Four-character mark of Qianlong and of the period (1736 – 1795),  
Qing dynasty

Agate

H 7.5 cm Dia 2.3 cm

Fuyun Xuan Collection donated by Christopher and  
Josephine Sin

C2023.0249



46. Pouch-shaped chalcedony snuff bottle carved with bats and coin  
design

Qing dynasty (1644 – 1911)

Chalcedony

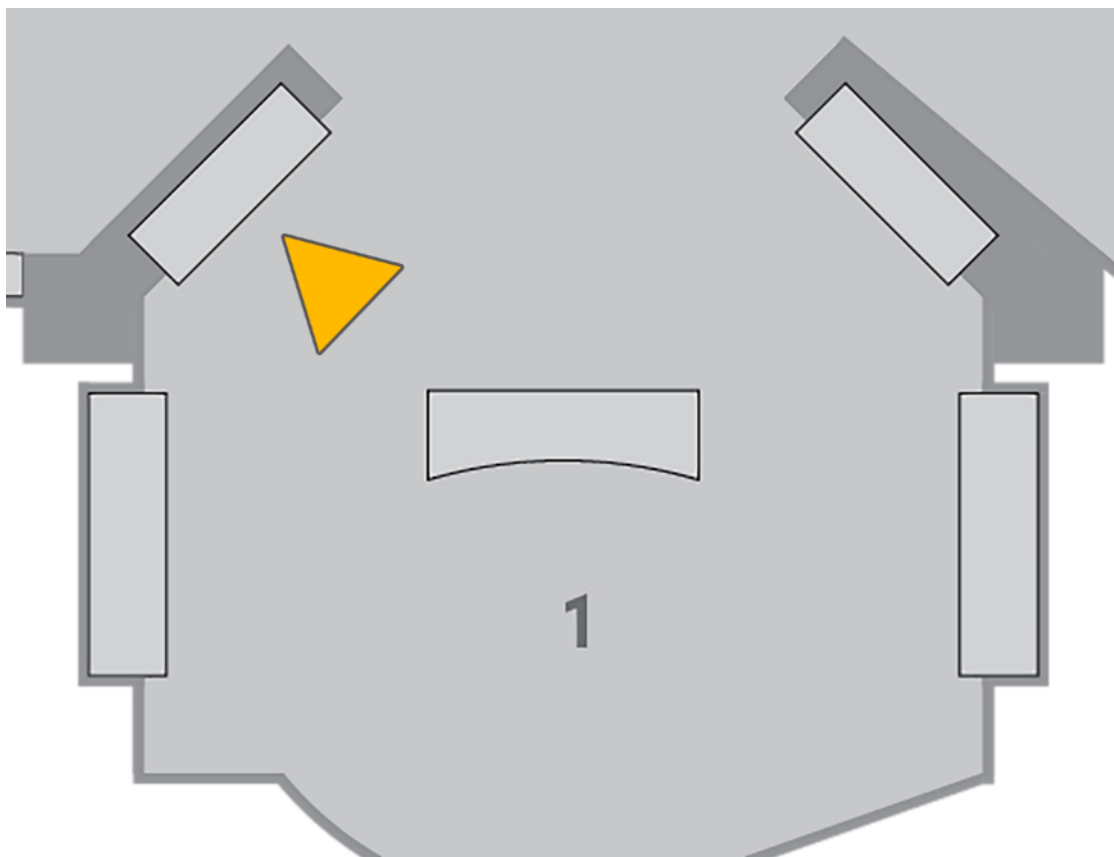
H 22 cm L 6 cm W 1.5 cm

Fuyun Xuan Collection donated by Christopher and Josephine Sin

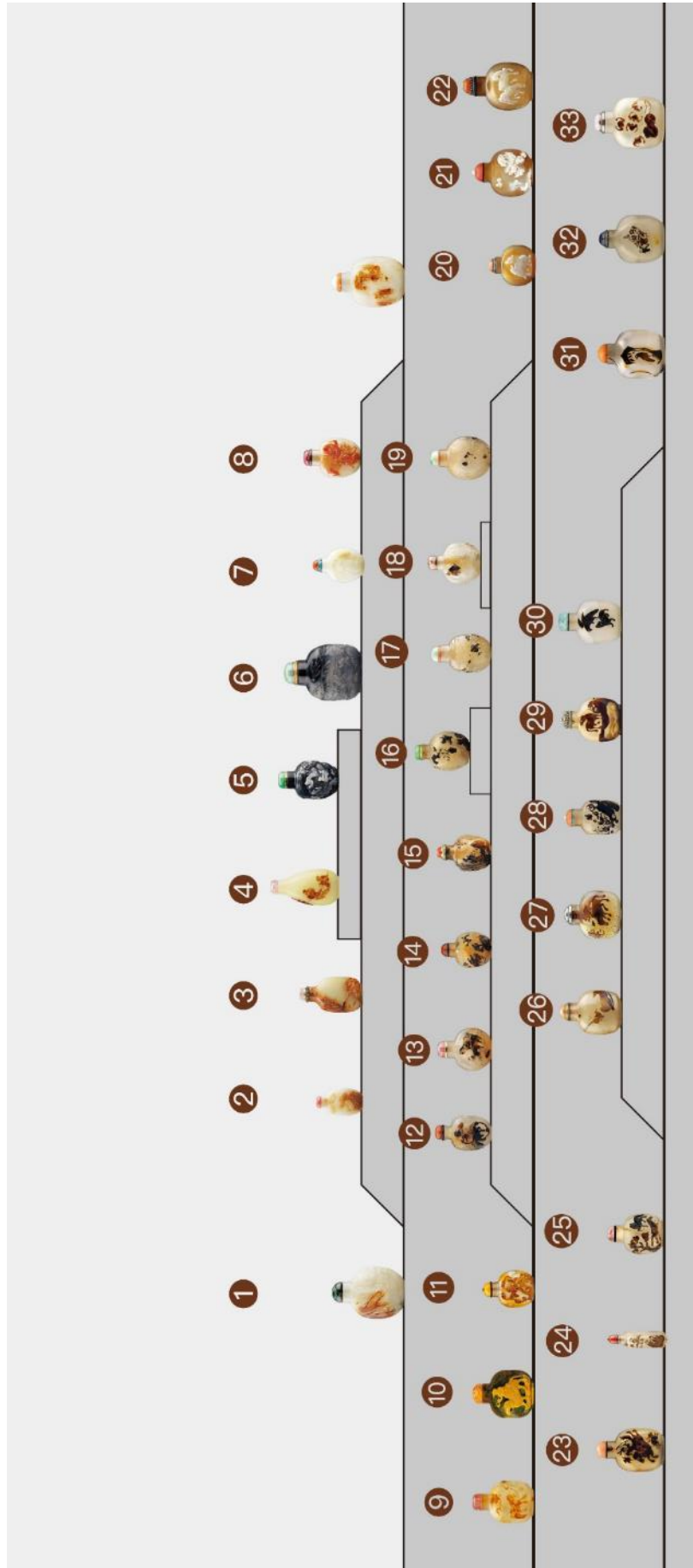
C2023.0253



## 1.3 Refined Materials - Cameo carving







- 
1. Jade snuff bottle with “Mi Fu inscribing on a rock” design  
Qing dynasty (1644 – 1911)  
Jade (white jade)  
H 8.3 cm L 6 cm W 3.5 cm  
Fuyun Xuan Collection donated by Christopher and Josephine Sin  
C2023.0044



- 
2. Snuff bottle carved with monkey picking *lingzhi* design  
Qing dynasty (1644 – 1911)  
Jade (white jade)  
H 5.5 cm L 3.2 cm W 1.8 cm  
Fuyun Xuan Collection donated by Christopher and Josephine Sin  
C2023.0046



- 
3. Jade snuff bottle carved with eight horses design  
Qing dynasty (1644 – 1911)  
Jade (yellow jade)  
H 7.2 cm L 4.1 cm W 2 cm  
Fuyun Xuan Collection donated by Christopher and Josephine Sin  
C2023.0008



- 
4. Snuff bottle carved with Luohan design  
Qing dynasty (1644 – 1911)  
Jade (yellow jade)  
H 7.8 cm L 4.2 cm W 2 cm  
Fuyun Xuan Collection donated by Christopher and Josephine Sin  
C2023.0009



- 
5. Snuff bottle carved with “Wang Xizhi exchanging calligraphy for geese” design  
Qing dynasty (1644 – 1911)  
Jade (black jade)  
H 7 cm L 4.5 cm W 4 cm  
Fuyun Xuan Collection donated by Christopher and Josephine Sin  
C2023.0051



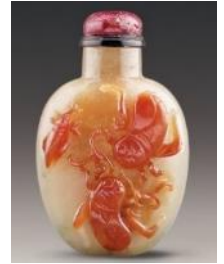
- 
6. Jade snuff bottle carved with “returning home in storm” design  
Qing dynasty (1644 – 1911)  
Jade (black jade)  
H 8.9 cm L 6.5 cm W 3.3 cm  
Fuyun Xuan Collection donated by Christopher and Josephine Sin  
C2023.0052



- 
7. Jade snuff bottle carved with “Mi Fu bowing to rock” design  
Qing dynasty (1644 – 1911)  
Jade (white jade)  
H 6 cm L 4 cm W 2.5 cm  
Fuyun Xuan Collection donated by Christopher and Josephine Sin  
C2023.0045



- 
8. Jade snuff bottle carved with beetles design  
Qing dynasty (1644 – 1911)  
Jade (white jade)  
H 6.5 cm L 4.5 cm W 3 cm  
Fuyun Xuan Collection donated by Christopher and Josephine Sin  
C2023.0043



- 
9. Jade snuff bottle carved with “Liu Chen and Ruan Zhao entering the Tiantai Mountains” and “Huaisu practising calligraphy” design  
Qing dynasty (1644 – 1911)  
Jade (white jade)  
H 8.3 cm L 5.9 cm W 3.2 cm  
Fuyun Xuan Collection donated by Christopher and Josephine Sin  
C2023.0047



- 
10. Chalcedony snuff bottle carved with animals design  
Qing dynasty (1644 – 1911)  
Chalcedony  
H 7 cm L 5 cm W 3 cm  
Fuyun Xuan Collection donated by Christopher and Josephine Sin  
C2023.0275



- 
11. Jasper snuff bottle carved with nomad on camel design  
Qing dynasty (1644 – 1911)  
Jasper  
H 7 m L 5.5 cm W 2.5 cm  
Fuyun Xuan Collection donated by Christopher and Josephine Sin  
C2023.0279



- 
12. Chalcedony snuff bottle carved with Liu Hai Waving a String of Coins and Toad design  
Qing dynasty (1644 – 1911)  
Chalcedony  
H 6 cm L 4.3 cm W 2.5 cm  
Fuyun Xuan Collection donated by Christopher and Josephine Sin  
C2023.0274



---

13. Chalcedony snuff bottle carved with “lions playing with a ball” and horse design

Qing dynasty (1644 – 1911)

Chalcedony

H 6.5 cm L 4 cm W 2.3 cm

Fuyun Xuan Collection donated by Christopher and Josephine Sin  
C2023.0262



---

14. Chalcedony snuff bottle carved with horses design

Qing dynasty (1644 – 1911)

Chalcedony

H 6.2 cm L 5 cm W 2.2 cm

Fuyun Xuan Collection donated by Christopher and Josephine Sin  
C2023.0258



---

15. Chalcedony snuff bottle carved with sage and plum blossom design

Qing dynasty (1644 – 1911)

Chalcedony

H 5.8 cm L 4.1 cm W 2.8 cm

Fuyun Xuan Collection donated by Christopher and Josephine Sin  
C2023.0255



---

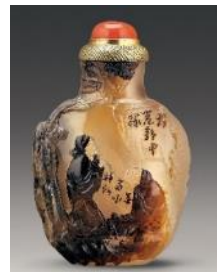
16. Chalcedony snuff bottle carved with sages design

Qing dynasty (1644 – 1911)

Chalcedony

H 6.3 cm L 4.2 cm W 2 cm

Fuyun Xuan Collection donated by Christopher and Josephine Sin  
C2023.0254



---

17. Chalcedony snuff bottle carved with “attaining the immortal elixir” design

Qing dynasty (1644 – 1911)

Chalcedony

H 6.2 cm L 4.5 cm W 2.8 cm

Fuyun Xuan Collection donated by Christopher and Josephine Sin  
C2023.0256



---

18. Chalcedony snuff bottle carved with fisherman and woodcutter design

Qing dynasty (1644 – 1911)

Chalcedony

H 7 cm L 4.5 cm W 2.5 cm

Fuyun Xuan Collection donated by Christopher and Josephine Sin  
C2023.0257



- 
19. Chalcedony snuff bottle carved with “Su Mu herding sheep” design  
Qing dynasty (1644 – 1911)  
Chalcedony  
H 6 cm L 5 cm W 2 cm  
Fuyun Xuan Collection donated by Christopher and Josephine Sin  
C2023.0259



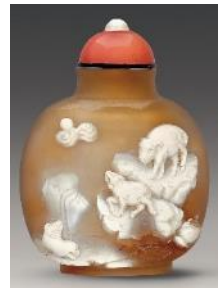
- 
20. Chalcedony snuff bottle carved with lady and plum blossoms design  
Qing dynasty (1644 – 1911)  
Chalcedony  
H 7 cm L 5 cm W 3 cm  
Fuyun Xuan Collection donated by Christopher and Josephine Sin  
C2023.0260



- 
21. Chalcedony snuff bottle carved with Washing Elephant design  
Qing dynasty (1644 – 1911)  
Chalcedony  
H 5.4 cm L 4.7 cm W 2.6 cm  
Fuyun Xuan Collection donated by Christopher and Josephine Sin  
C2023.0277



- 
22. Chalcedony snuff bottle carved with Three Goats Welcoming Spring design  
Qing dynasty (1644 – 1911)  
Chalcedony  
H 7 cm L 5.5 cm W 4 cm  
Fuyun Xuan Collection donated by Christopher and Josephine Sin  
C2023.0278



- 
23. Chalcedony snuff bottle carved with two horses design  
Qing dynasty (1644 – 1911)  
Chalcedony  
H 8 cm L 5.5 cm W 3.5 cm  
Fuyun Xuan Collection donated by Christopher and Josephine Sin  
C2023.0276



- 
24. Chalcedony snuff bottle carved with hunting design  
Qing dynasty (1644 – 1911)  
Chalcedony  
H 7.8 cm L 5 cm W 2 cm  
Fuyun Xuan Collection donated by Christopher and Josephine Sin  
C2023.0266





---

25. Chalcedony snuff bottle carved with figures on boat design

Qing dynasty (1644 – 1911)

Chalcedony

H 7 cm L 2 cm W 2 cm

Fuyun Xuan Collection donated by Christopher and Josephine Sin  
C2023.0272



---

26. Chalcedony snuff bottle carved with two horses design

Qing dynasty (1644 – 1911)

Chalcedony

H 6.6 cm L 4.7 cm W 3 cm

Fuyun Xuan Collection donated by Christopher and Josephine Sin  
C2023.0265



---

27. Agate snuff bottle carved with ducks design

Qing dynasty (1644 – 1911)

Agate

H 7.2 cm L 5.2 cm W 2.1 cm

Fuyun Xuan Collection donated by Christopher and Josephine Sin  
C2023.0268



---

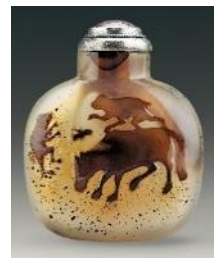
28. Chalcedony snuff bottle carved with monkey on horse with bee design

Qing dynasty (1644 – 1911)

Chalcedony

H 6.5 cm L 5.5 cm W 2.5 cm

Fuyun Xuan Collection donated by Christopher and Josephine Sin  
C2023.0263



---

29. Chalcedony snuff bottle carved with magpies and plum blossoms design

Qing dynasty (1644 – 1911)

Chalcedony

H 6.5 cm L 2.1 cm W 4 cm

Fuyun Xuan Collection donated by Christopher and Josephine Sin  
C2023.0269



---

30. Chalcedony snuff bottle carved with horse, bee and monkey design

Qing dynasty (1644 – 1911)

Agate

H 7 cm L 5.1 cm W 1.6 cm

Fuyun Xuan Collection donated by Christopher and Josephine Sin  
C2023.0264



---

31. Chalcedony snuff bottle carved with eagle and bear design

Qing dynasty (1644 – 1911)

Chalcedony

H 7.2 cm L 5.1 cm W 2 cm

Fuyun Xuan Collection donated by Christopher and Josephine Sin  
C2023.0267



---

32. Chalcedony snuff bottle carved with eagle design

Qing dynasty (1644 – 1911)

Chalcedony

H 7.8 cm L 5.6 cm W 2.7 cm

Fuyun Xuan Collection donated by Christopher and Josephine Sin  
C2023.0270



---

33. Chalcedony snuff bottle carved with the two immortals Hehe design

Qing dynasty (1644 – 1911)

Chalcedony

H 7.5 cm L 5.5 cm W 2 cm

Fuyun Xuan Collection donated by Christopher and Josephine Sin  
C2023.0271



---

34. Chalcedony snuff bottle carved with five bats and double gourd design

Qing dynasty (1644 – 1911)

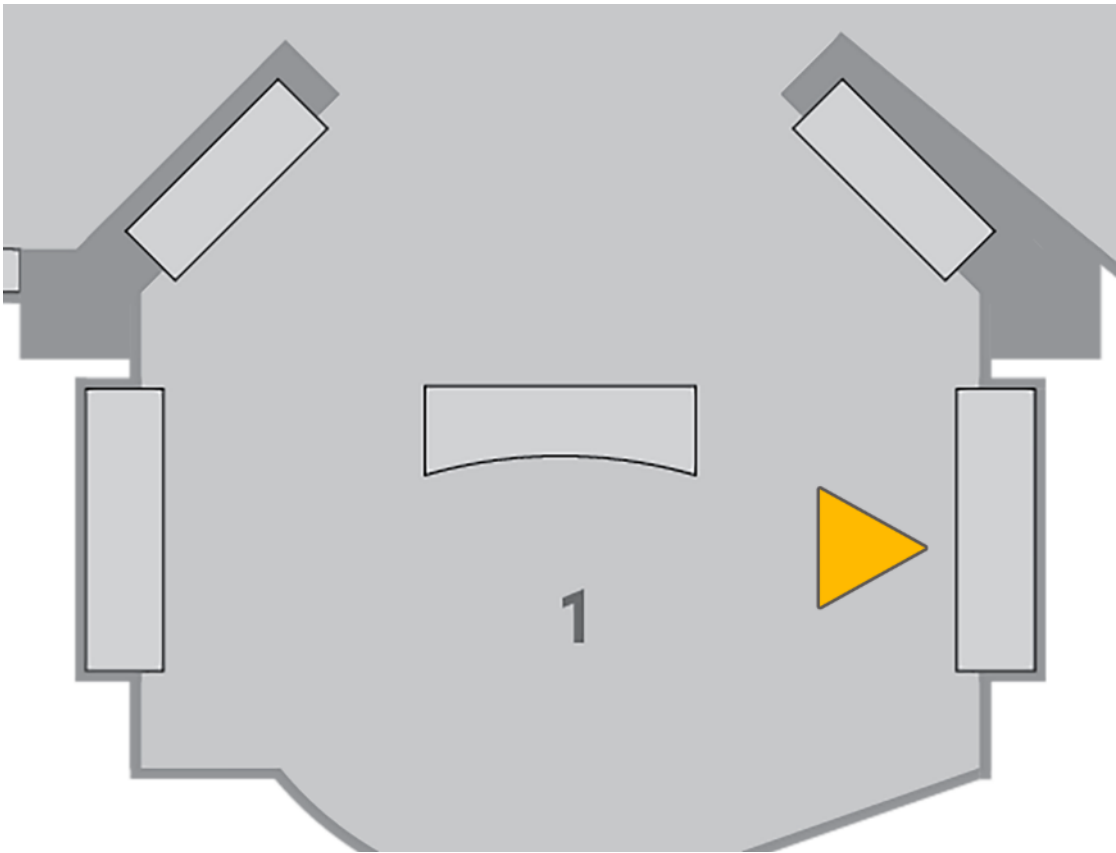
Chalcedony

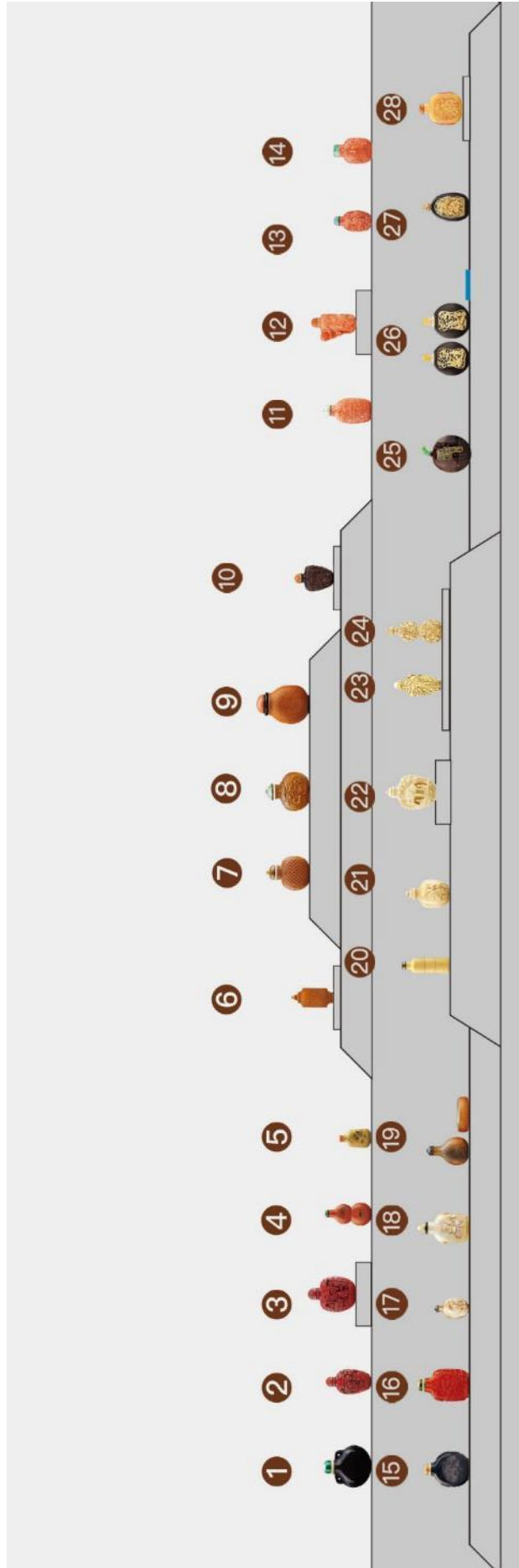
H 8 cm L 6 cm W 2.5 cm

Fuyun Xuan Collection donated by Christopher and Josephine Sin  
C2023.0261



# 1.4 Refined Materials - Organic materials





1. Black lacquer snuff bottle  
 Qing dynasty (1644 – 1911)  
 Lacquer  
 H 7.5 cm L 6.5 cm W 2.3 cm  
 Fuyun Xuan Collection donated by Christopher and Josephine Sin  
 C2023.0335



2. Cinnabar lacquer snuff bottle carved with figures in a pavilion design  
 Qing dynasty (1644 – 1911)  
 Lacquer  
 H 7 cm L 3.8 cm W 2.4 cm  
 Fuyun Xuan Collection donated by Christopher and Josephine Sin  
 C2023.0332



3. Cinnabar lacquer snuff bottle carved with figures in a pavilion design  
 Four-character mark of Qianlong and of the period (1736 – 1795),  
 Qing dynasty  
 Lacquer  
 H 7.5 cm L 5.5 cm W 2.5 cm  
 Fuyun Xuan Collection donated by Christopher and Josephine Sin  
 C2023.0331



4. Double-gourd-shaped lacquer snuff bottle carved with archaic scripts and water birds  
 1889  
 Lacquer  
 H 7.3 cm L 3.5 cm W 1.5 cm  
 Fuyun Xuan Collection donated by Christopher and Josephine Sin  
 C2023.0333



5. Snuff bottle with magpies and plum blossoms design in dry-lacquer painted with polychrome pigment and gilding  
 Qing dynasty (1644 – 1911)  
 Lacquer  
 H 5 cm L 3 cm W 1 cm  
 Fuyun Xuan Collection donated by Christopher and Josephine Sin  
 C2023.0334





6. Bamboo veneer snuff bottle carved with plum blossoms design  
 Qing dynasty (1644 – 1911)  
 Bamboo  
 H 6.5 cm L 3 cm W 1.5 cm  
 Fuyun Xuan Collection donated by Christopher and Josephine Sin  
 C2023.0330



7. Moulded gourd snuff bottle with wickerwork pattern design  
 Qing dynasty (1644 – 1911)  
 Gourd  
 H 6.7 cm L 5.3 cm W 3.1 cm  
 Fuyun Xuan Collection donated by Christopher and Josephine Sin  
 C2023.0328



8. Moulded gourd snuff bottle with *chi*-dragon holding *shou* character design  
 Six-character mark of Daoguang and of the period (1821 – 1850),  
 Qing dynasty  
 Gourd  
 H 8.5 cm L 6 cm W 3.5 cm  
 Fuyun Xuan Collection donated by Christopher and Josephine Sin  
 C2023.0327



9. Moulded gourd snuff bottle with cranes and deer design  
 Qing dynasty (1644 – 1911)  
 Gourd  
 H 7 cm L 6 cm W 3.5 cm  
 Fuyun Xuan Collection donated by Christopher and Josephine Sin  
 C2023.0329



10. Wood snuff bottle with “Zhang Liang returning shoes in Yiqiao” design  
 Qing dynasty (1644 – 1911)  
 Wood (cherrywood)  
 H 6 cm L 4.1 cm W 1.9 cm  
 Fuyun Xuan Collection donated by Christopher and Josephine Sin  
 C2023.0324



11. Coral snuff bottle carved with bats amidst clouds design

Qing dynasty (1644 – 1911)

Coral

H 7.5 cm L 4 cm W 2 cm

Fuyun Xuan Collection donated by Christopher and Josephine Sin  
C2023.0302



12. Coral snuff bottle with “Liu Hai playing with a toad” design carved in the round

Qing dynasty (1644 – 1911)

Coral

H 7 cm L 4.2 cm W 2.5 cm

Fuyun Xuan Collection donated by Christopher and Josephine Sin  
C2023.0303



13. Coral snuff bottle carved with lions playing with balls design

Qing dynasty (1644 – 1911)

Coral

H 5.9 cm L 3.3 cm W 2.4 cm

Fuyun Xuan Collection donated by Christopher and Josephine Sin  
C2023.0305



14. Coral snuff bottle carved with “searching for plum blossoms in the snow” design

1847 / 1907

Coral

H 6 cm L 4 cm W 2.5 cm

Fuyun Xuan Collection donated by Christopher and Josephine Sin  
C2023.0304



15. Jet snuff bottle carved with duck design

Qing dynasty (1644 – 1911)

Jet

H 7 cm L 5.5 cm W 2.5 cm

Fuyun Xuan Collection donated by Christopher and Josephine Sin  
C2023.0322



16. Amber snuff bottle carved with “Su Wu herding sheep” and “searching for plum blossoms in the snow” design

Qing dynasty (1644 – 1911)

Amber

H 8 cm L 5 cm W 2 cm

Fuyun Xuan Collection donated by Christopher and Josephine Sin  
C2023.0312



---

17. Mother-of-pearl snuff bottle carved with sandpiper and clam design

Qing dynasty (1644 – 1911)

Mother-of-pearl

H 5.3 cm L 3.2 cm W 1.9 cm

Fuyun Xuan Collection donated by Christopher and Josephine Sin  
C2023.0326



---

18. Agate snuff bottle with Luohan design in mother-of-pearl inlay

Qing dynasty (1644 – 1911)

Agate

H 8 cm L 5 cm W 3 cm

Fuyun Xuan Collection donated by Christopher and Josephine Sin  
C2023.0298



---

19. Rhinoceros horn snuff bottle and saucer

Qing dynasty (1644 – 1911)

Rhinoceros horn

Snuff bottle: H 6.6 cm L 4.3 cm W 2.7 cm

Saucer: H 1.4 cm L 4 cm W 6 cm

Fuyun Xuan Collection donated by Christopher and Josephine Sin  
C2023.0300



---

20. Bamboo-shaped ivory snuff bottle

Qing dynasty (1644 – 1911)

Ivory

H 7.5 cm Dia 2.5 cm

Fuyun Xuan Collection donated by Christopher and Josephine Sin  
C2023.0314



---

21. Melon-shaped ivory snuff bottle carved with elder and deer design

Qing dynasty (1644 – 1911)

Ivory

H 6.8 cm L 4.3 cm W 2.6 cm

Fuyun Xuan Collection donated by Christopher and Josephine Sin  
C2023.0317



22. Ivory snuff bottle carved with figures on boat design in openwork

Four-character mark of Qianlong period, Qing dynasty

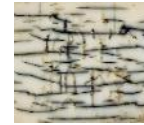
18th century

Ivory

H 7.8 cm L 5.5 cm W 3 cm

Fuyun Xuan Collection donated by Christopher and Josephine Sin

C2023.0316



23. Ivory snuff bottle carved with lotus leaf and insect design

Qing dynasty (1644 – 1911)

Ivory

H 7.3 cm L 3.3 cm W 1.9 cm

Fuyun Xuan Collection donated by Christopher and Josephine Sin

C2023.0318



24. Double-gourd-shaped ivory snuff bottle carved with gourds design

Qing dynasty (1644 – 1911)

Ivory

H 8.8 cm L 3.8 cm W 1.2 cm

Fuyun Xuan Collection donated by Christopher and Josephine Sin

C2023.0315



25. Coconut shell snuff bottle carved with archaic script

1872

Coconut shell

H 8 cm L 5.8 cm W 1.8 cm

Fuyun Xuan Collection donated by Christopher and Josephine Sin

C2023.0319



26. Pair of coconut shell snuff bottles with figural design in ivory inlay and saucer

Qing dynasty (1644 – 1911)

Coconut shell and ivory

Snuff bottle (1): H 7.5 cm L 5.3 cm W 2.1 cm

Snuff bottle (2): H 7.4 cm L 5.4 cm W 2 cm

Saucer: H 0.7 cm L 4.7 cm W 2.3 cm

Fuyun Xuan Collection donated by Christopher and Josephine Sin

C2023.0320



---

27. Coconut Shell snuff bottle carved with “Wang Zhaojun going beyond the frontier” design in hornbill inlay

Qing dynasty (1644 – 1911)

Coconut shell and hornbill

H 7.4 cm L 4.4 cm W 1.6 cm

Fuyun Xuan Collection donated by Christopher and Josephine Sin  
C2023.0321



---

28. Hornbill snuff bottle carved with sages playing chess design

Qing dynasty (1644 – 1911)

Hornbill

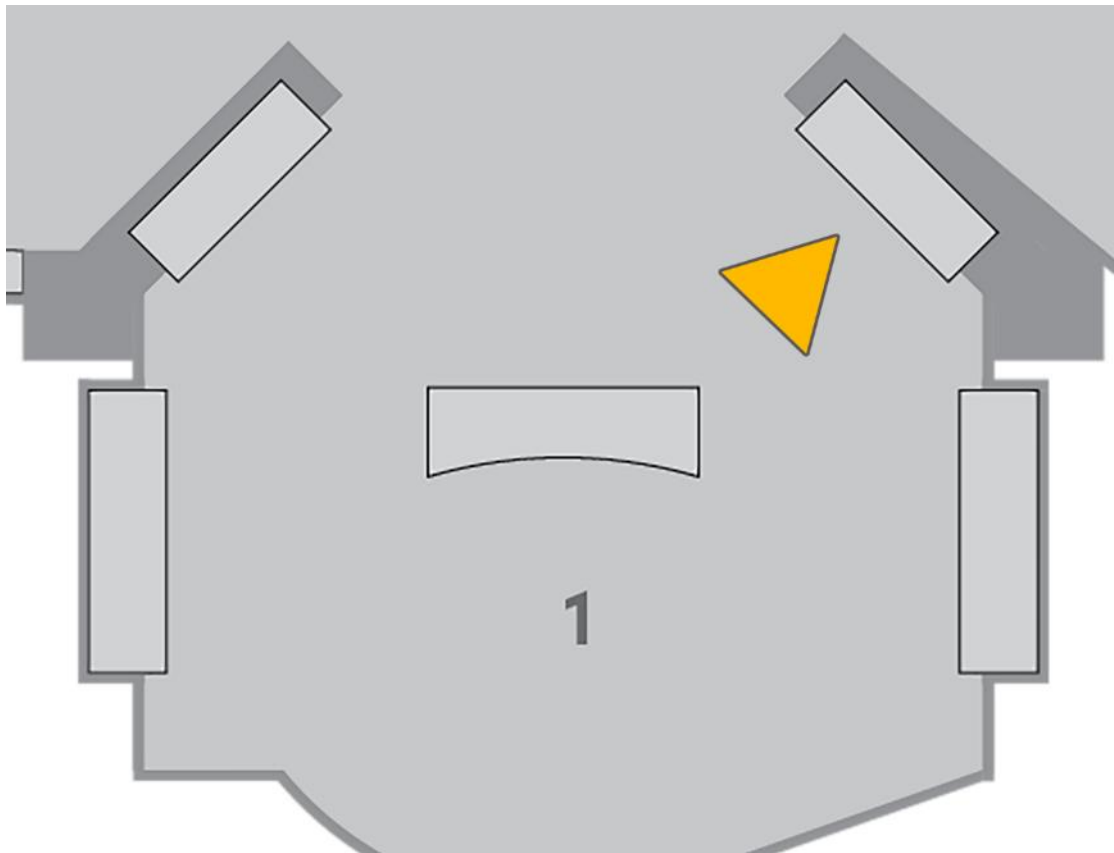
H 6.7 cm L 5 cm W 1.8 cm

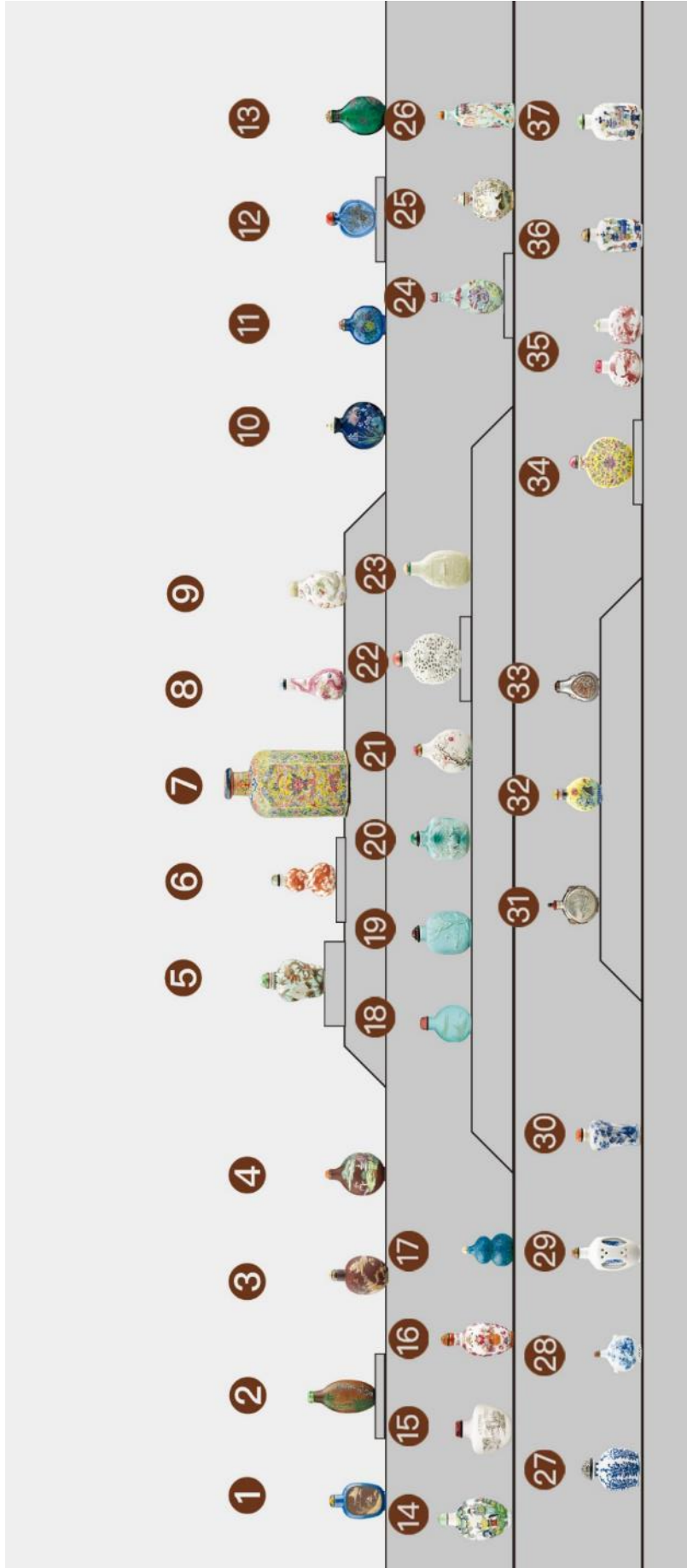
Fuyun Xuan Collection donated by Christopher and Josephine Sin  
C2023.0325





## 1.5 Refined Materials - Processed materials





1. Yixing snuff bottle with slip-decorated landscape and flowers design  
 Qing dynasty (1644 – 1911)  
 Ceramics  
 H 6.7 cm L 4.3 cm W 1.7 cm  
 Fuyun Xuan Collection donated by Christopher and Josephine Sin  
 C2023.0238



2. Yixing purple clay snuff bottle with bamboo design in painted enamels  
 Lin Birui (act. Daoguang period)  
 1832  
 Ceramics  
 H 8 cm L 4 cm W 2.2 cm  
 Fuyun Xuan Collection donated by Christopher and Josephine Sin  
 C2023.0236



3. Yixing purple clay snuff bottle with slip-decorated landscape design  
 1840  
 Ceramics  
 H 7 cm L 4.5 cm W 3 cm  
 Fuyun Xuan Collection donated by Christopher and Josephine Sin  
 C2023.0235



4. Yixing purple clay snuff bottle with landscape and pavilion design in painted enamels  
 Qing dynasty (1644 – 1911)  
 Ceramics  
 H 7 cm L 5 cm W 2.5 cm  
 Fuyun Xuan Collection donated by Christopher and Josephine Sin  
 C2023.0237



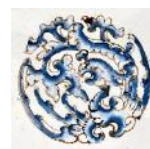
5. Snuff bottle with dragon and floral design in *fencai* enamels and gilt on turquoise ground  
 Four-character mark of Qianlong period, Qing dynasty  
 19th century  
 Ceramics  
 H 7.5 cm L 5 cm W 3 cm  
 Fuyun Xuan Collection donated by Christopher and Josephine Sin  
 C2023.0189



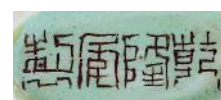
6. Double-gourd-shaped snuff bottle with five dragons and flaming pearl design in coral-red enamel  
 Jiaqing period (1796 – 1820), Qing dynasty  
 Ceramics  
 H 7.6 cm L 4 cm W 3.9 cm  
 Fuyun Xuan Collection donated by Christopher and Josephine Sin  
 C2023.0200



7. Copper snuff jar with dragon design in painted enamels  
 Qing dynasty (1644 – 1911)  
 Metal (copper)  
 H 14.8 cm L 7.9 cm W 7 cm  
 Fuyun Xuan Collection donated by Christopher and Josephine Sin  
 C2023.0347



8. Snuff bottle with dragon chasing flaming pearl amidst clouds design in *fencai* enamels with appliqué decoration  
 Four-character mark of Qianlong period, Qing dynasty  
 19th century  
 Ceramics  
 H 8 cm L 4 cm W 3 cm  
 Fuyun Xuan Collection donated by Christopher and Josephine Sin  
 C2023.0231



9. Snuff bottle with dragon amidst clouds design in *fencai* enamels with appliqué decoration  
 Mark of “Guanyao *neizao*”  
 Qing dynasty (1644 – 1911)  
 Ceramics  
 H 6.9 cm L 4.5 cm W 2.8 cm  
 Fuyun Xuan Collection donated by Christopher and Josephine Sin  
 C2023.0224



---

10. Blue glass snuff bottle with floral design in painted enamels

Mark of “Guyue Xuan”

Qing dynasty (1644 – 1911)

Glass

H 7 cm L 5.5 cm W 2.5 cm

Fuyun Xuan Collection donated by Christopher and Josephine Sin

C2023.0169



---

11. Translucent blue glass snuff bottle with floral design in painted enamels

Four-character mark of Qianlong period, Qing dynasty

18th – 19th century

Glass

H 5.4 cm L 4.5 cm W 2 cm

Fuyun Xuan Collection donated by Christopher and Josephine Sin

C2023.0168



---

12. Translucent blue glass snuff bottle incised and gilt with lotus and orchid design

Mark of “Xingyouheng Tang zhi”

19th century

Glass

H 5.9 cm L 4.4 cm W 1.2 cm

Fuyun Xuan Collection donated by Christopher and Josephine Sin

C2023.0159



---

13. Translucent green glass snuff bottle with floral and butterfly design in painted enamels

Mark of “Guyue Xuan”

Qing dynasty (1644 – 1911)

Glass

H 7 cm L 4.5 cm W 2.3 cm

Fuyun Xuan Collection donated by Christopher and Josephine Sin

C2023.0170





- 
14. Yixing purple clay snuff bottle with figures, flowers and butterfly design painted on white ground  
Qing dynasty (1644 – 1911)  
Ceramics  
H 8.5 cm L 5 cm W 2.5 cm  
Fuyun Xuan Collection donated by Christopher and Josephine Sin  
C2023.0240



- 
15. Snuff bottle with landscape design in grisaille enamel  
Four-character mark of Tongzhi period (1862 – 1874)  
1862  
Ceramics  
H 6.5 cm L 6 cm W 3 cm  
Fuyun Xuan Collection donated by Christopher and Josephine Sin  
C2023.0227



- 
16. Snuff bottle with flower basket design in Canton enamels  
19th century  
Ceramics  
H 8.5 cm L 3.9 cm W 2.4 cm  
Fuyun Xuan Collection donated by Christopher and Josephine Sin  
C2023.0221



- 
17. Double-gourd-shaped snuff bottle in robin's egg glaze  
Qing dynasty (1644 – 1911)  
Ceramics  
H 6 cm Dia 3.8 cm  
Fuyun Xuan Collection donated by Christopher and Josephine Sin  
C2023.0229



- 
18. Pale blue glass snuff bottle incised and gilt with landscape design  
Zhou Honglai (act. Guangxu period)  
1901  
Glass  
H 6 cm L 4.3 cm W 2 cm  
Fuyun Xuan Collection donated by Christopher and Josephine Sin  
C2023.0114





19. Snuff bottle carved with shepherd boy design in relief on turquoise ground

Chen Guozhi (act. Daoguang to Xianfeng period)

Mark of “Chen Guozhi *zuo*”

Qing dynasty (1644 – 1911)

Ceramics

H 6.9 cm L 5.1 cm W 3.5 cm

Fuyun Xuan Collection donated by Christopher and Josephine Sin

C2023.0232



20. Snuff bottle carved with landscape design in relief on emerald ground

Hu Wenxiang (dates unknown)

Mark of “Hu Wenxiang *zuo*”

Qing dynasty (1644 – 1911)

Ceramics

H 7 cm L 5 cm W 2.5 cm

Fuyun Xuan Collection donated by Christopher and Josephine Sin

C2023.0233



21. Snuff bottle with bamboo and plum blossoms design in *fencai* enamels with appliqué decoration

Six-character mark of Daoguang and of the period (1821 – 1850),

Qing dynasty

Ceramics

H 6.9 cm L 5.1 cm W 3.3 cm

Fuyun Xuan Collection donated by Christopher and Josephine Sin

C2023.0204



22. Snuff bottle carved with nine lions playing with a ball design in openwork and in white glaze

Four-character mark of Jiaqing and of the period (1796 – 1820),

Qing dynasty

Ceramics

H 8 cm L 6 cm W 3 cm

Fuyun Xuan Collection donated by Christopher and Josephine Sin

C2023.0198



23. Snuff bottle carved with landscape and boat design in relief

Wang Bingrong (act. Tongzhi to Guangxu period)

Mark of “Wang Bingrong *zuo*”

Late 19th century

Ceramics

H 8 cm L 4.5 cm W 2 cm

Fuyun Xuan Collection donated by Christopher and Josephine Sin

C2023.0230



24. Snuff bottle with bats, *chi*-dragons and millet design in *fencai*

enamels with appliqué decoration

Qing dynasty (1644 – 1911)

Ceramics

H 8.5 cm L 4 cm W 2.5 cm

Fuyun Xuan Collection donated by Christopher and Josephine Sin

C2023.0234



25. Snuff bottle with flower and birds in panel design in *fencai*

enamels

Six-character mark of Qianlong and of the period (1736 – 1795),

Qing dynasty

Ceramics

H 7.1 cm L 5 cm W 2.2 cm

Fuyun Xuan Collection donated by Christopher and Josephine Sin

C2023.0186



26. Snuff bottle with flowers and magpie design in *fencai* enamels on turquoise ground

Seal of “Daya Zhai”

Mark of “*yongqing changchun*”

Qing dynasty (1644 – 1911)

Ceramics

H 9 cm Dia 3 cm

Fuyun Xuan Collection donated by Christopher and

Josephine Sin

C2023.0225



27. Octagonal-shaped snuff bottle with *lingzhi* design in underglaze blue

blue

Six-character mark of Yongzheng period, Qing dynasty

18th – 19th century

Ceramics

H 7 cm Dia 5 cm

Fuyun Xuan Collection donated by Christopher and Josephine Sin

C2023.0172



28. Snuff bottle with Tao Yuanming, Su Wu and Li Ling in underglaze blue

Four-character mark of Yongzheng period, Qing dynasty

18th – 19th century

Ceramics

H 5.5 cm L 4.5 cm W 2 cm

Fuyun Xuan Collection donated by Christopher and Josephine Sin

C2023.0171



29. Snuff bottle with figural design in underglaze blue and red Qing dynasty (1644 – 1911)

Ceramics

H 8 cm L 4 cm W 3 cm

Fuyun Xuan Collection donated by Christopher and Josephine Sin

C2023.0228



30. Snuff bottle with “Seven Sages of the Bamboo Grove” design in underglaze blue

Qing dynasty (1644 – 1911)

Ceramics

H 7.5 cm Dia 3.5 cm

Fuyun Xuan Collection donated by Christopher and Josephine Sin

C2023.0202



31. Cupronickel snuff bottle engraved with fisherman and woodcutter design

Qing dynasty (1644 – 1911)

Metal (cupronickel)

H 6 cm L 4.5 cm W 1.5 cm

Fuyun Xuan Collection donated by Christopher and Josephine Sin

C2023.0336



32. Copper snuff bottle with quails, flowers and butterfly design in painted enamels

Four-character mark of Qianlong period, Qing dynasty

18th century

Metal (copper)

H 6 cm L 4 cm W 2 cm

Fuyun Xuan Collection donated by Christopher and Josephine Sin

C2023.0346



33. Galvanised iron snuff bottle with *chi*-dragon design

Qing dynasty (1644 – 1911)

Metal (galvanised iron)

H 5.2 cm L 3.5 cm W 1.5 cm

Fuyun Xuan Collection donated by Christopher and Josephine Sin

C2023.0337



34. Snuff bottle with lotus scroll design in *fencai* enamels

Six-character mark of Jiaqing and of the period (1796 – 1820),

Qing dynasty

Ceramics

H 7.5 cm L 6 cm W 1.5 cm

Fuyun Xuan Collection donated by Christopher and Josephine Sin

C2023.0197



35. Pair of snuff bottles with wild geese design in underglaze red

Four-character mark of Yongzheng period

Qing dynasty (1644 – 1911)

Ceramics

(1): H 5.5 cm L 4.5 cm W 2 cm

(2): H 5.7 cm L 4.5 cm W 2 cm

Fuyun Xuan Collection donated by Christopher and Josephine Sin

C2023.0173



---

36. Snuff bottle with antiquities design in *doucai* enamels

Four-character mark of Daoguang and of the period  
(1821 – 1850), Qing dynasty

Ceramics

H 7.2 cm L 4 cm W 1.8 cm

Fuyun Xuan Collection donated by Christopher and Josephine Sin  
C2023.0194



---

37. Snuff bottle with antiquities design in *doucai* enamels

Four-character mark of Daoguang and of the period  
(1821 – 1850), Qing dynasty

Ceramics

H 7.6 cm L 4.4 cm W 2.2 cm

Fuyun Xuan Collection donated by Christopher and Josephine Sin  
C2023.0195

